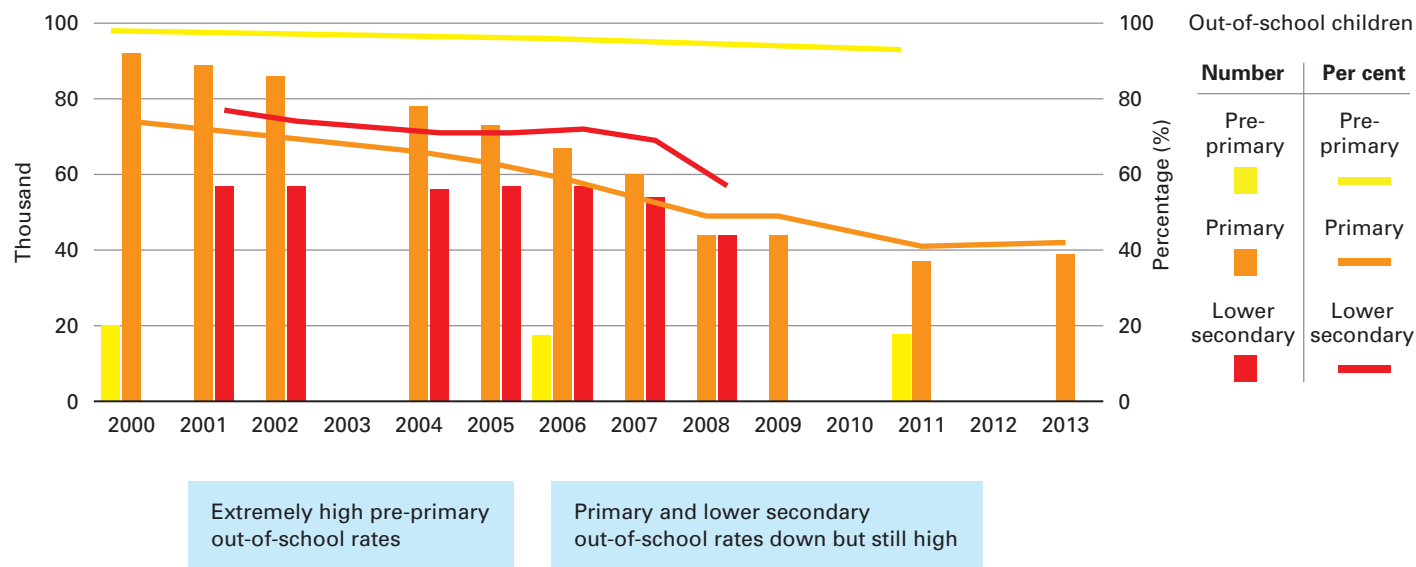
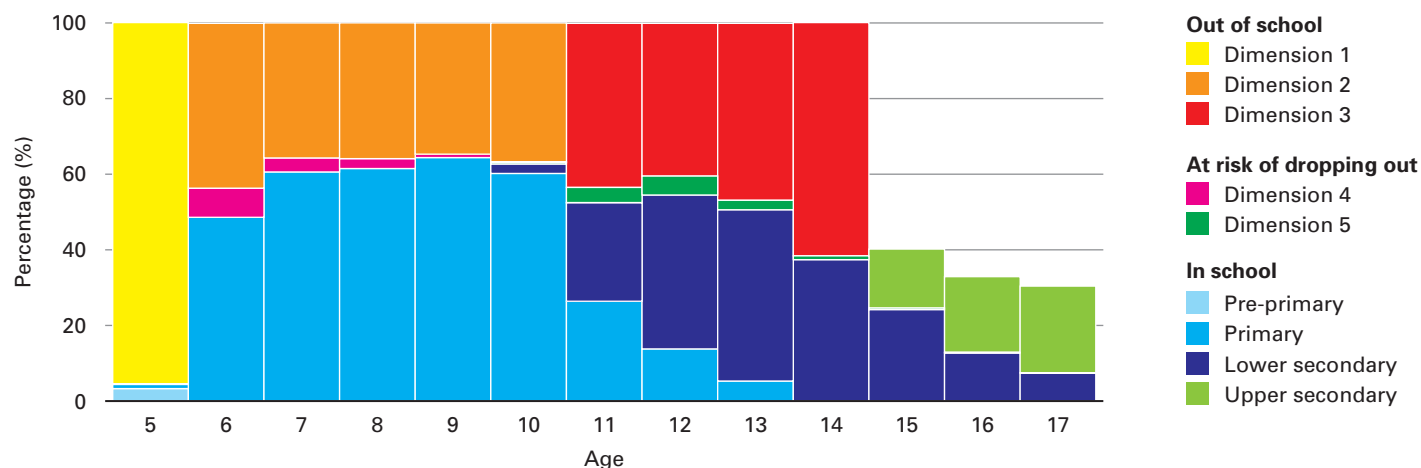


1. Numbers and percentages of out-of-school children (2000-2013)¹



2. The Five Dimensions of Exclusion²

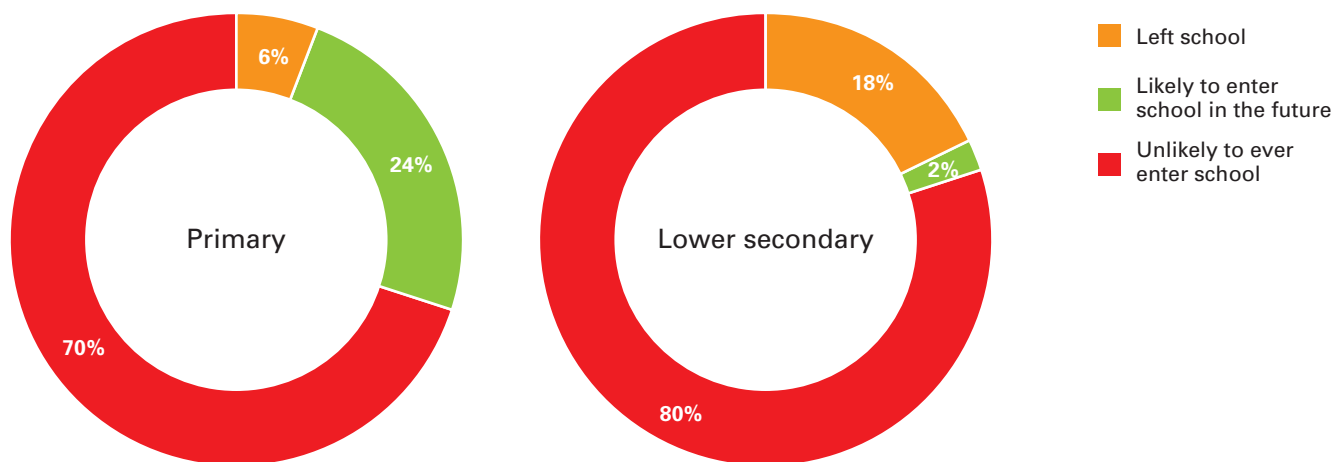


Dimensions of Exclusion	Dimension 1	Dimension 2	Dimension 3	Dimension 4	Dimension 5
	Children of pre-primary school age who are not in pre-primary or primary school	Children of primary school age who are not in primary or secondary school	Children of lower secondary school age who are not in primary or secondary school	Children who are in primary school but at risk of dropping out	Children who are in lower secondary school but at risk of dropping out
#/% of children excluded	19,009 96%	34,739 37%	33,651 48%	2,819 5%	2,107 6%

¹ UNESCO Institute for Statistics (UIS).

² Calculated from UNICEF refugee and UN population statistics 2012.

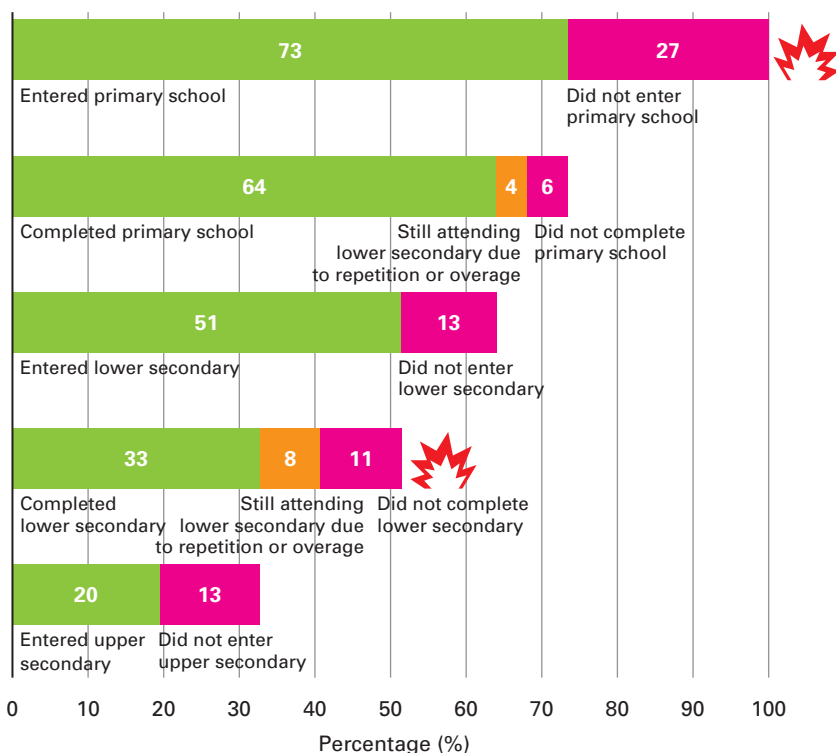
3. Classification of the out-of-school population (Dimensions 2 and 3) by school exposure³



For both age groups, the majority of out-of-school children are unlikely to ever enter school

4. Schooling pathways of school aged children⁴

Reference Population: upper secondary school-aged adolescents



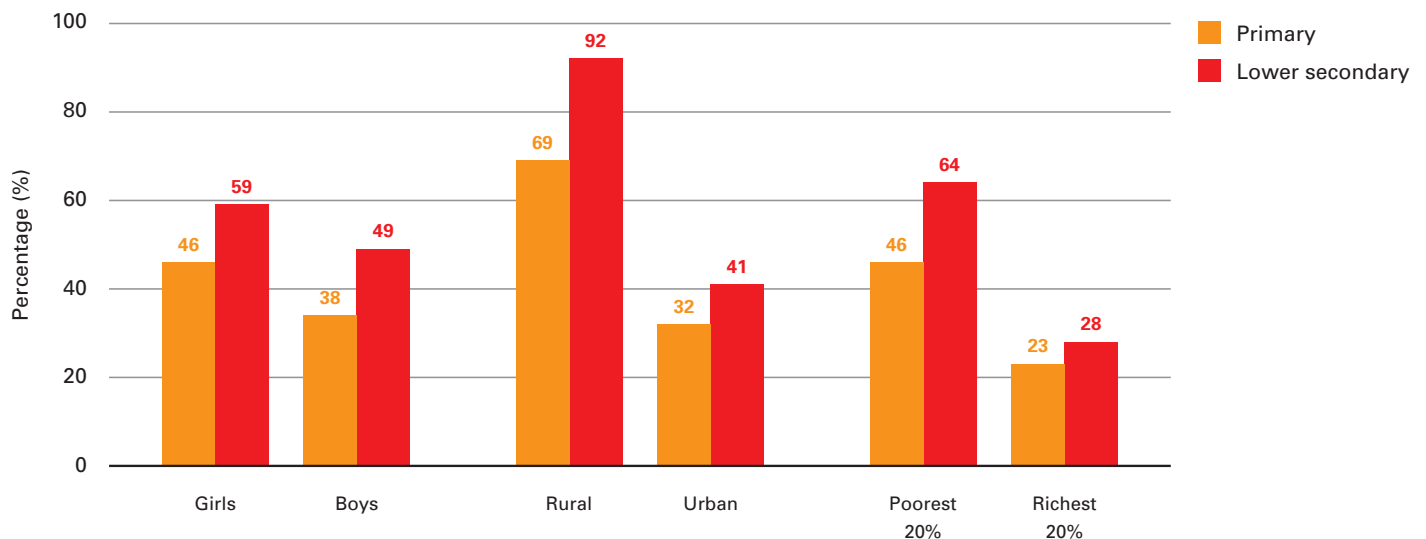
35% of children aged 2 to 9 years report some kind of disability

9% of school-aged children work full-time

³ Multiple Indicator Cluster Surveys (MICS) 2006.

⁴ MICS 2006. In 2006 the official upper secondary age for Djibouti was 16-18.

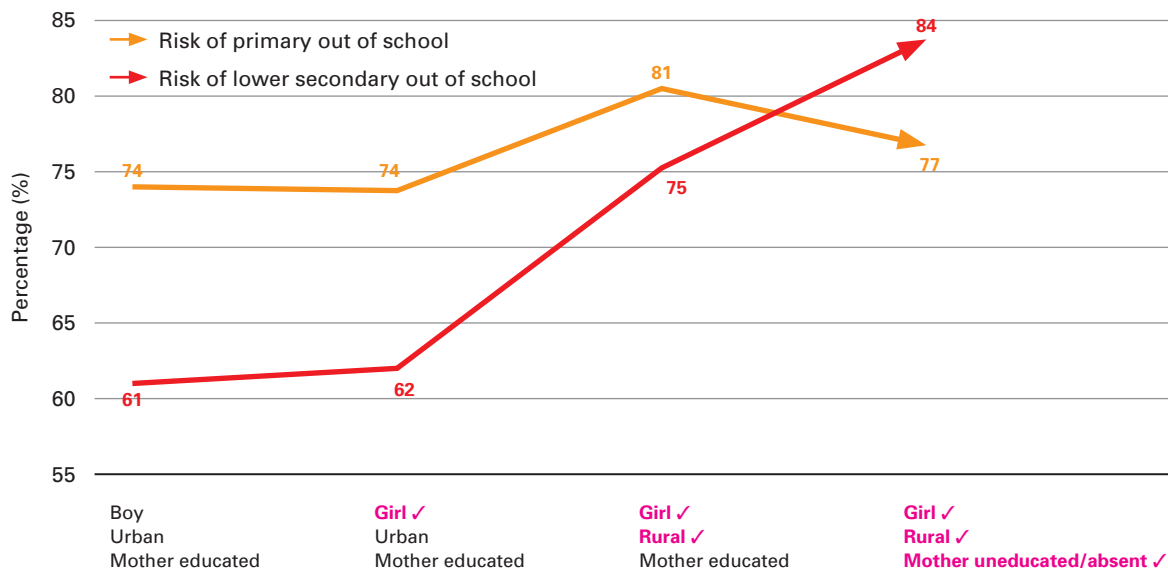
5. Out-of-school children by background characteristics (Dimensions 2 and 3)⁵



Out-of-school rates for the poorest children and rural children are much higher

Out-of-school rates are also higher for girls

6. Cumulative out-of-school risk related to combined characteristics⁶

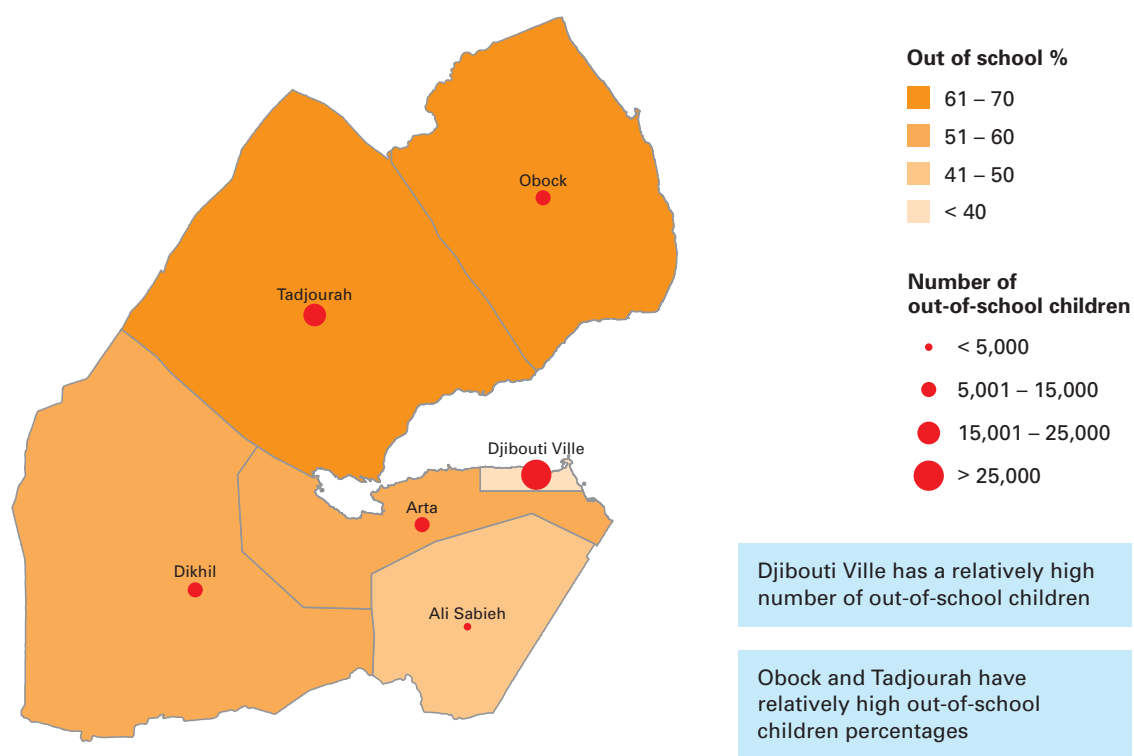


For lower secondary school-aged children, area of residence and mother's education are important for school attendance

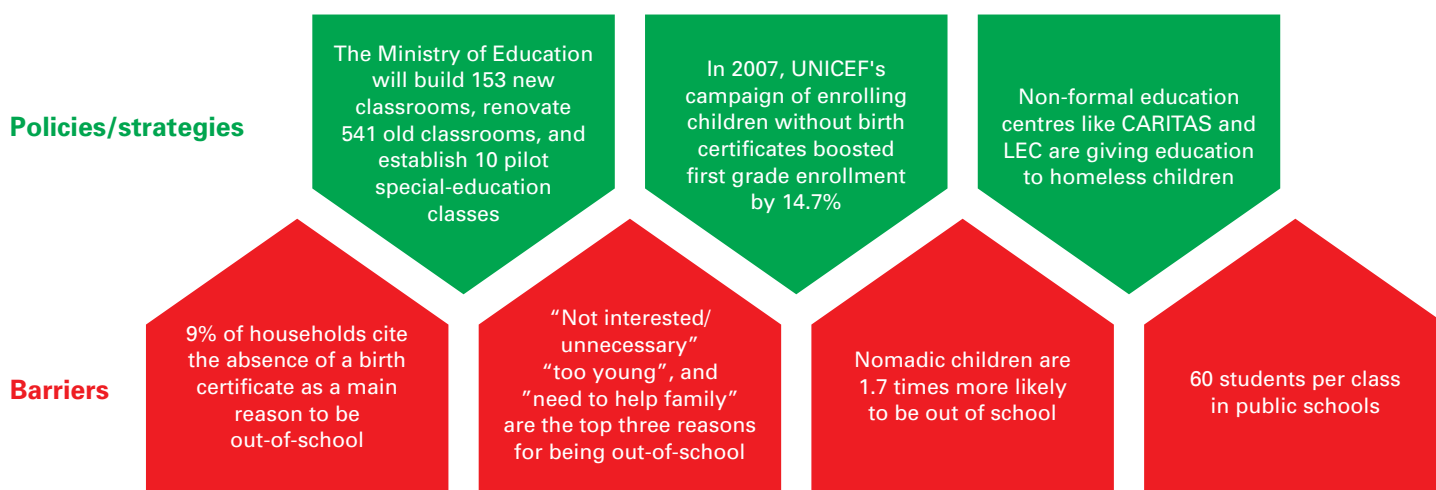
⁵ Calculated from Statistics Yearbook 2013, UN Population Statistics Revision 2012, and the Djibouti Survey.

⁶ Calculated from MICS 2006 using multivariate logit regressions. Wealth quintile estimates are unavailable.

7. Out-of-school children (Dimensions 2 and 3) by district⁷



8. Barriers and policies/strategies⁸



⁷ Calculated from Statistics Yearbook 2013, UN Population Statistics Revision 2012, and the Djibouti Survey.

⁸ Extracted from survey and policy reports published between 2007 and 2013.