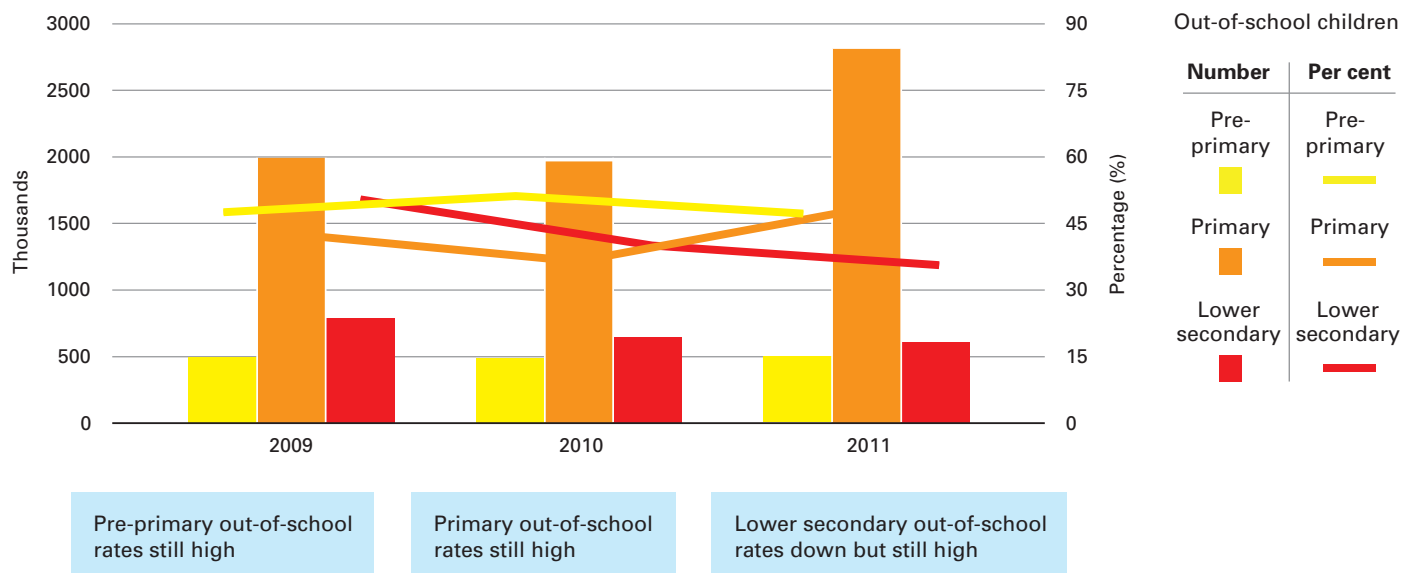
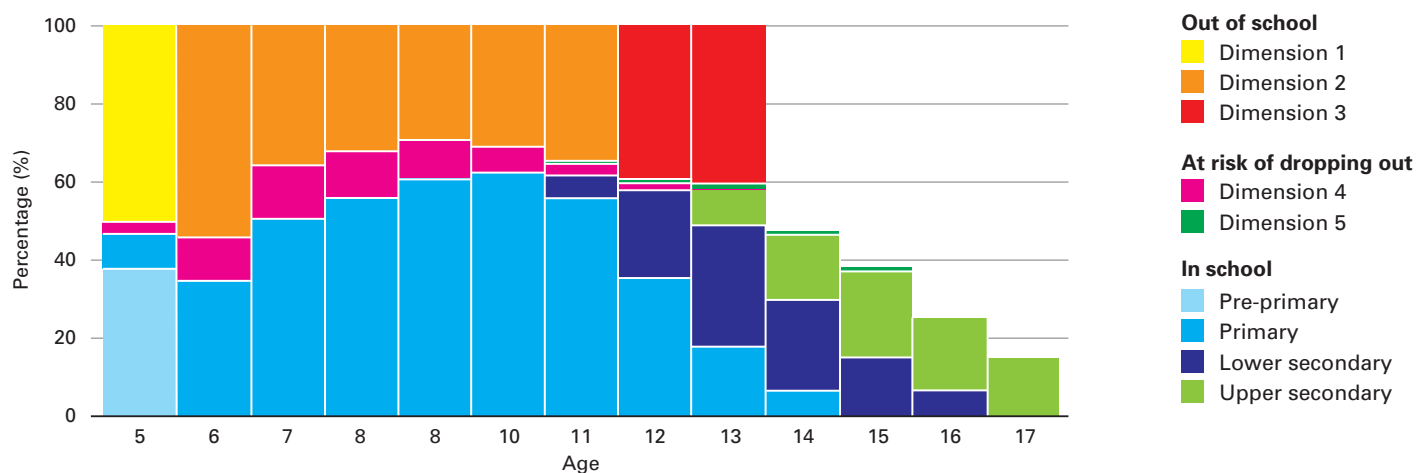


1. Numbers and percentages of out-of-school children (2009-2011)¹



2. The Five Dimensions of Exclusion²

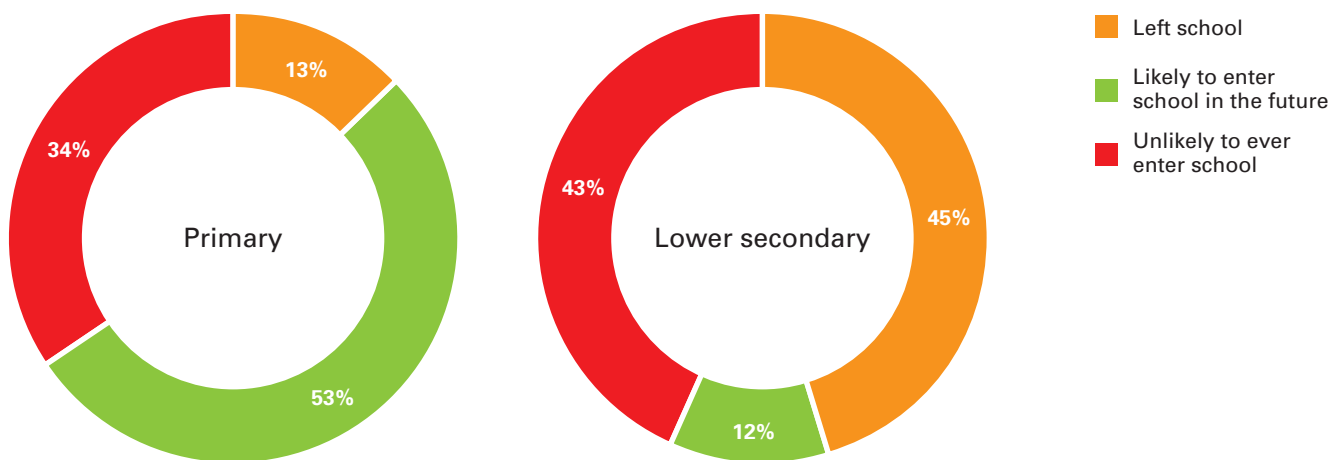


Dimensions of Exclusion	Dimension 1	Dimension 2	Dimension 3	Dimension 4	Dimension 5
	Children of pre-primary school age who are not in pre-primary or primary school	Children of primary school age who are not in primary or secondary school	Children of lower secondary school age who are not in primary or secondary school	Children who are in primary school but at risk of dropping out	Children who are in lower secondary school but at risk of dropping out
#/% of children excluded	0.49 million 50%	1.97 million 37%	0.64 million 40%	0.53 million 15%	0.03 million 6%

¹ Sudan Household Health Survey (SHHS) 2010 and Education Management Information System (EMIS).

² Calculated from EMIS 2009 and 2010. Refugees and stateless persons are excluded from the statistics.

3. Classification of the out-of-school population (Dimensions 2 and 3) by school exposure³

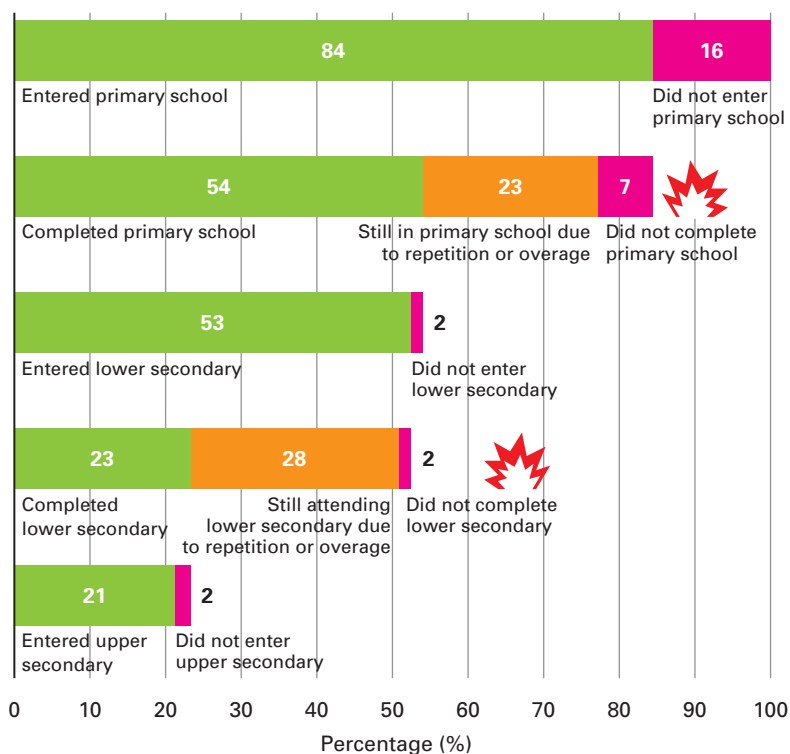


One third of primary school-aged out-of-school children are unlikely to ever enter school. Over half of primary school-aged out-of-school children enter school late

Most lower secondary school-aged out-of-school children either drop out or are unlikely to ever go to school

4. Schooling pathways of school aged children⁴

Reference population: upper secondary age (14-16 years old)



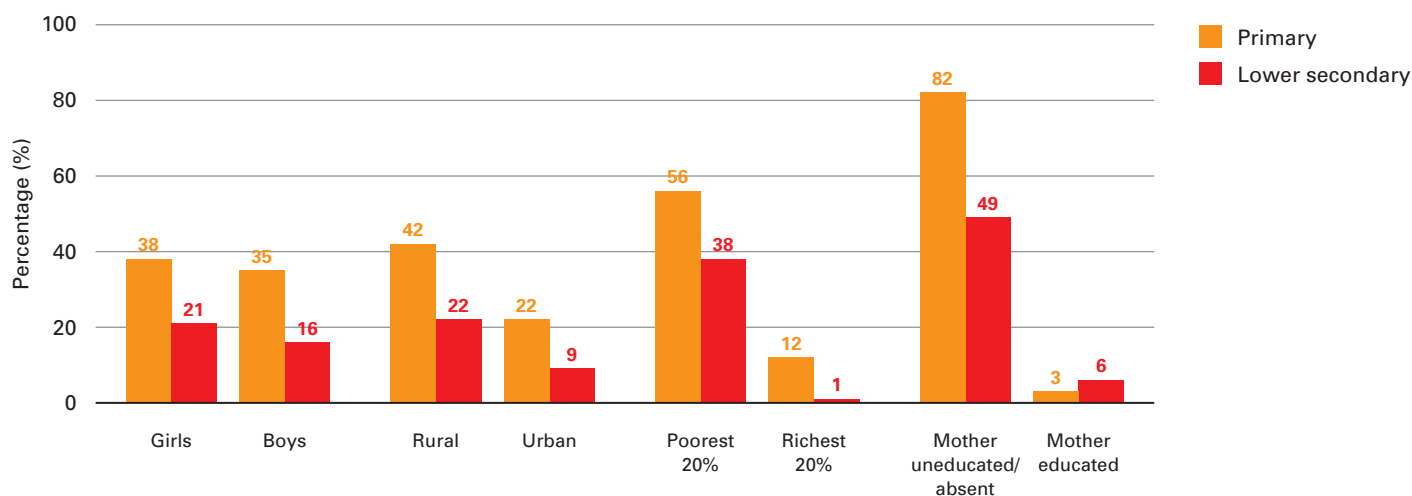
90% of economically active children are out of school

One third of children in school are two or more years overage for their grades

³ Calculated from Population Projections for 2010 and SHHS 2010.

⁴ Labour Force Survey 2011; Multiple Indicator Cluster Surveys (MICS) 2010; SHHS 2010.

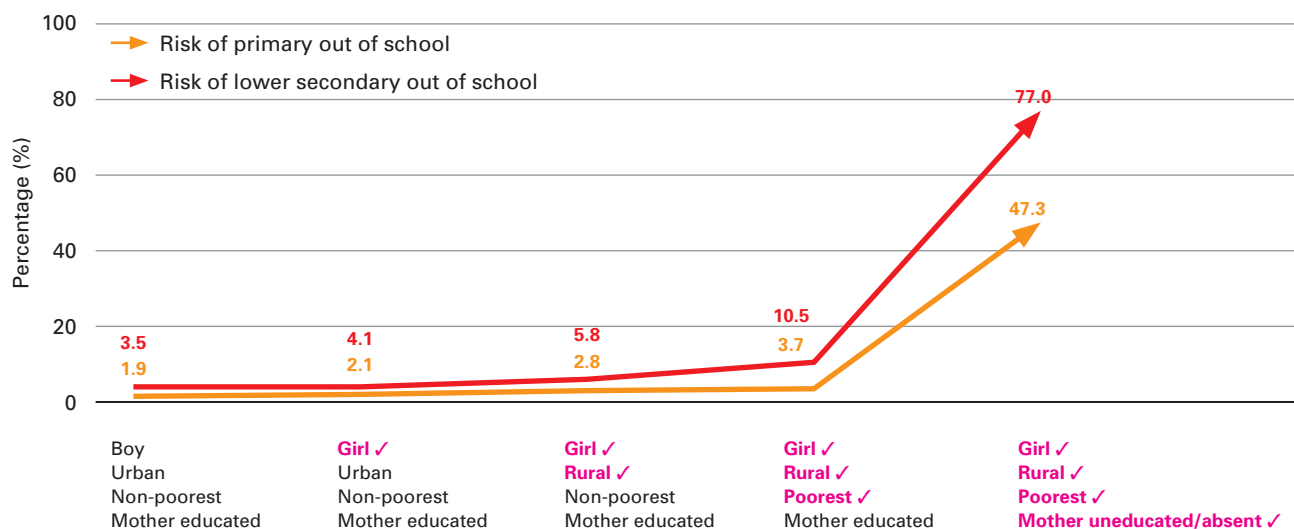
5. Out-of-school children by background characteristics (Dimensions 2 and 3)⁵



Out-of-school rates are higher for girls, rural children and the poorest 20%

Out-of-school rates for children whose mothers are uneducated or absent are much higher than those living with an educated mother

6. Out-of-school risk related to combined characteristics⁶

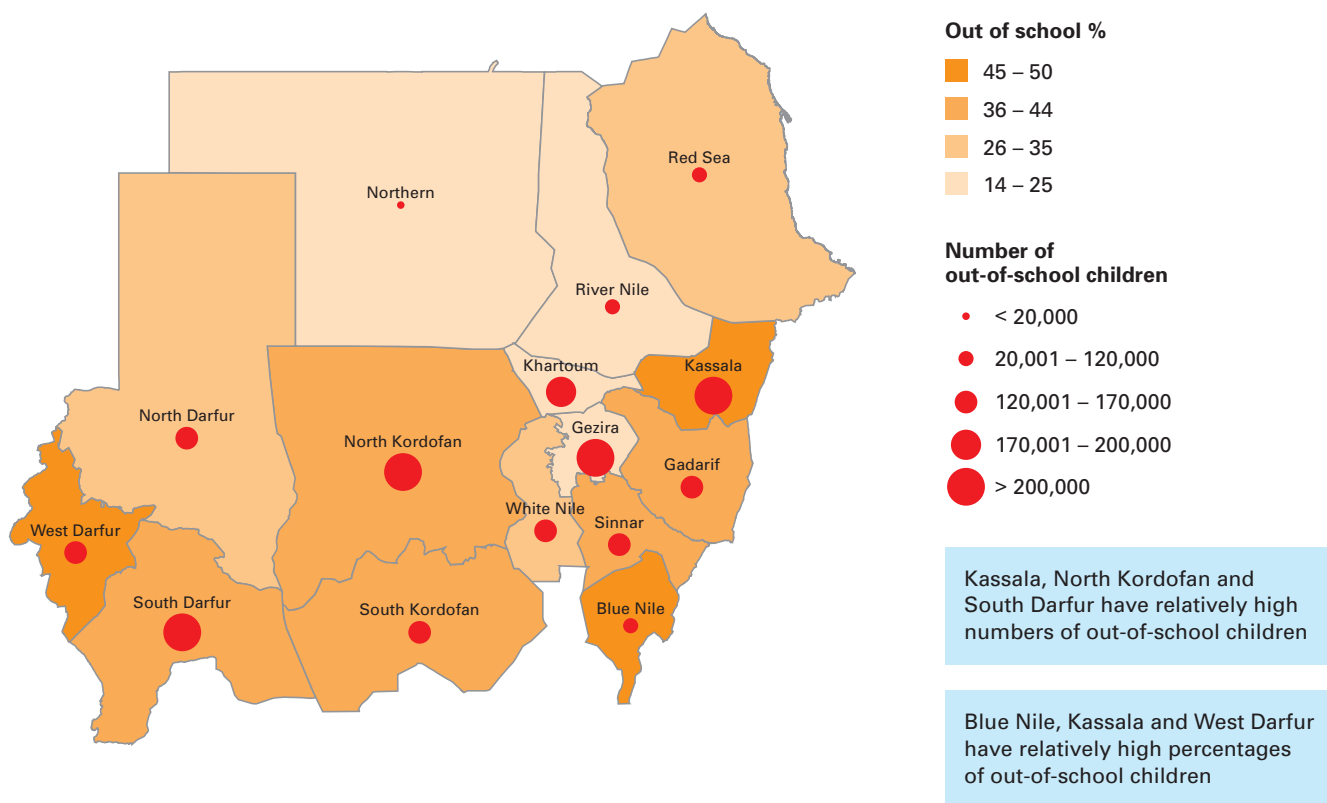


A child with all four risk characteristics is 40 times more likely to be out of school at primary school age, and 13 times more likely to be out of school at lower secondary school age. Mother's education level plays a critical role in school attendance.

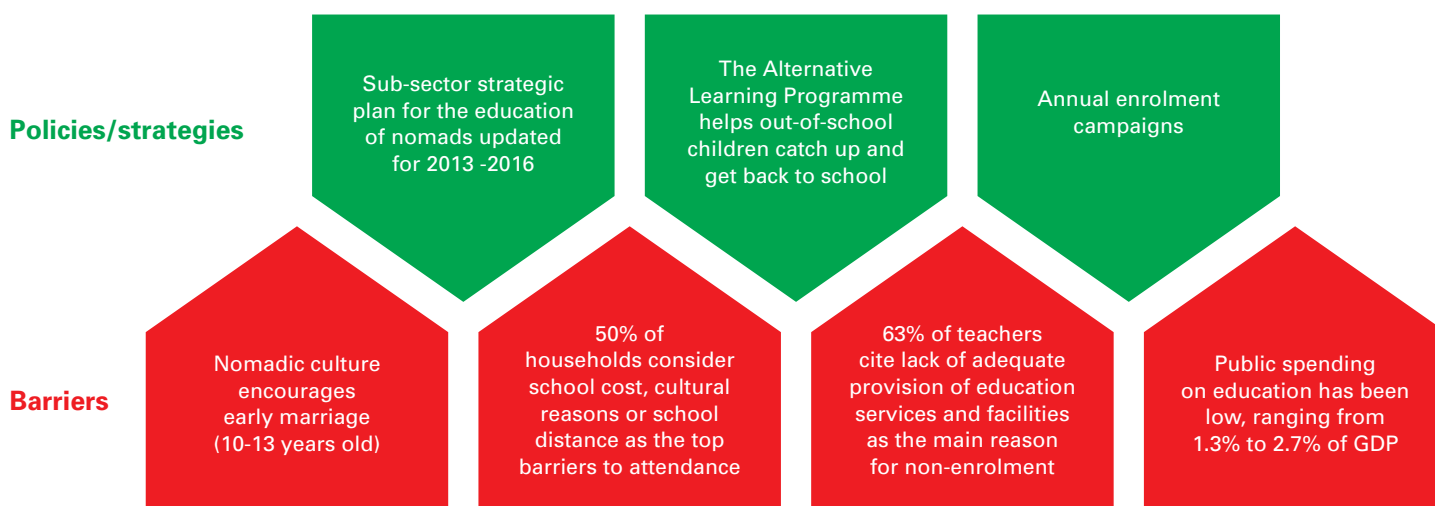
⁵ Calculated from MICS 2010. Uneducated mothers refer to those not finishing any formal education.

⁶ Calculated from MICS 2010 using multivariate logit regressions. Marginal effects are presented.

7. Out-of-school children (Dimensions 2 and 3) by state⁷



8. Barriers and policies/strategies⁸



⁷ SHHS 2010.

⁸ Extracted from survey and policy reports published between 2008- 2013.