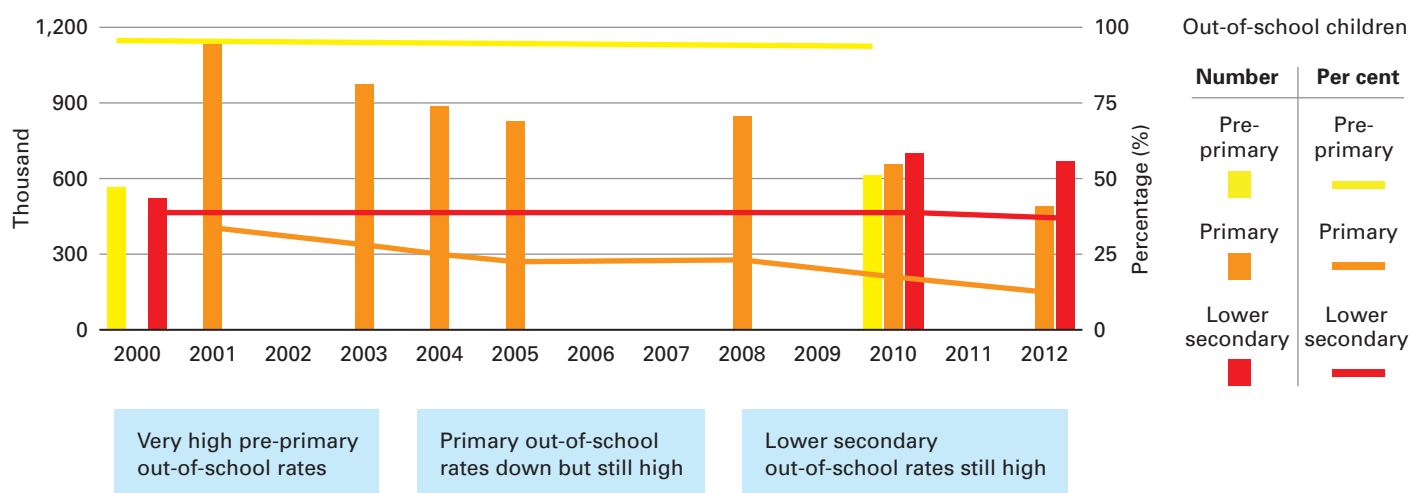
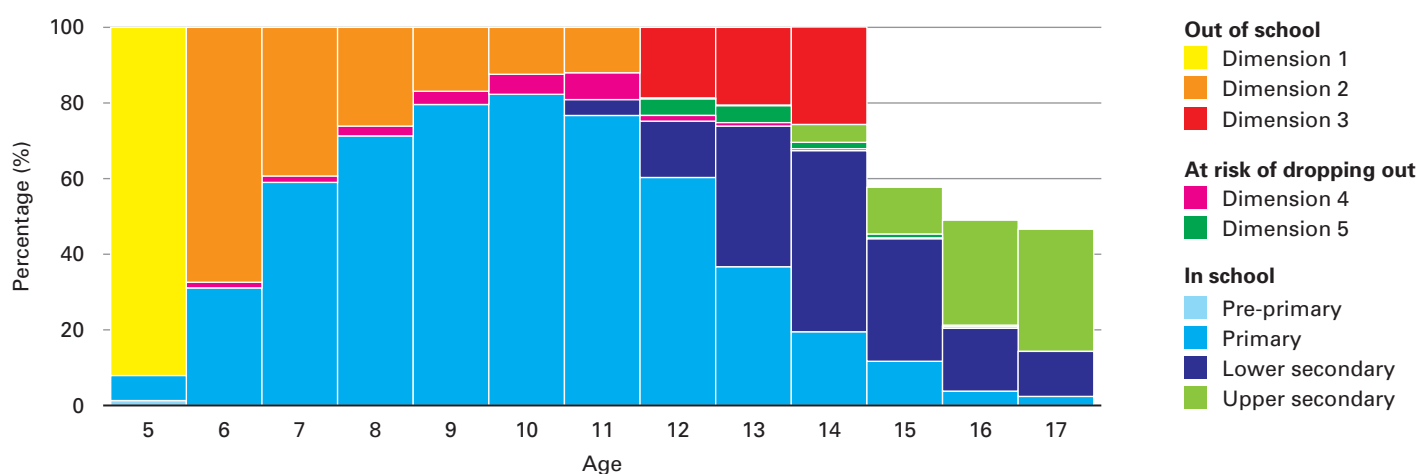


1. Numbers and percentages of out-of-school children (2000-2012)¹



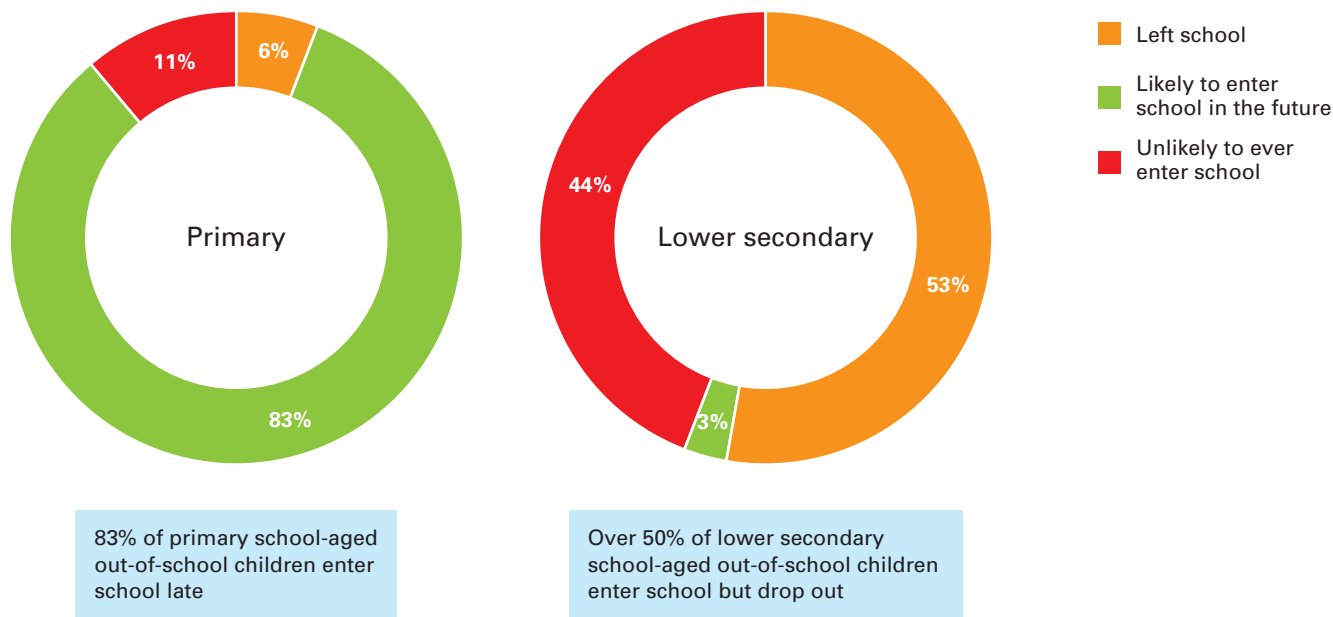
2. The Five Dimensions of Exclusion²



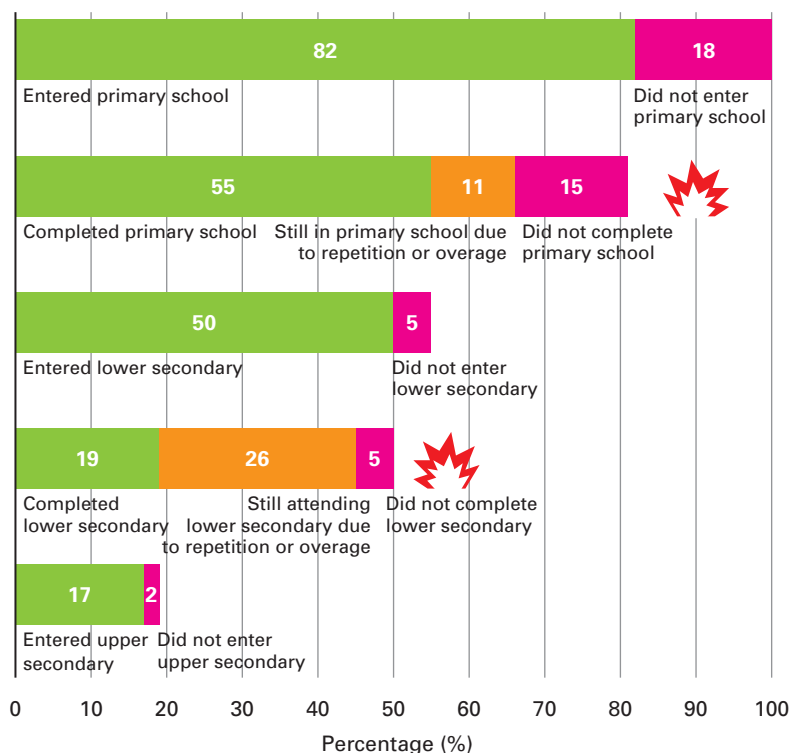
Dimensions of Exclusion	Dimension 1	Dimension 2	Dimension 3	Dimension 4	Dimension 5
	Children of pre-primary school age who are not in pre-primary or primary school	Children of primary school age who are not in primary or secondary school	Children of lower secondary school age who are not in primary or secondary school	Children who are in primary school but at risk of dropping out	Children who are in lower secondary school but at risk of dropping out
#/% of children excluded	0.40 million 92%	1.20 million 30%	0.40 million 22%	0.50 million 16%	0.07 million 11%

¹ UNESCO Institute for Statistics (UIS).

² UIS 2011 and National Social Protection Monitoring Survey (SPMS) in Yemen, Baseline, 2012 (UNICEF & IPC, 2013). By-age DE4 and DE5 are proxies because the data source does not allow for accurate calculation. Refugees and stateless persons are excluded from the statistics.

3. Classification of the out-of-school population (Dimensions 2 and 3) by school exposure³4. Schooling pathways of school aged children⁴

Reference population: upper secondary age (15-17 years old)

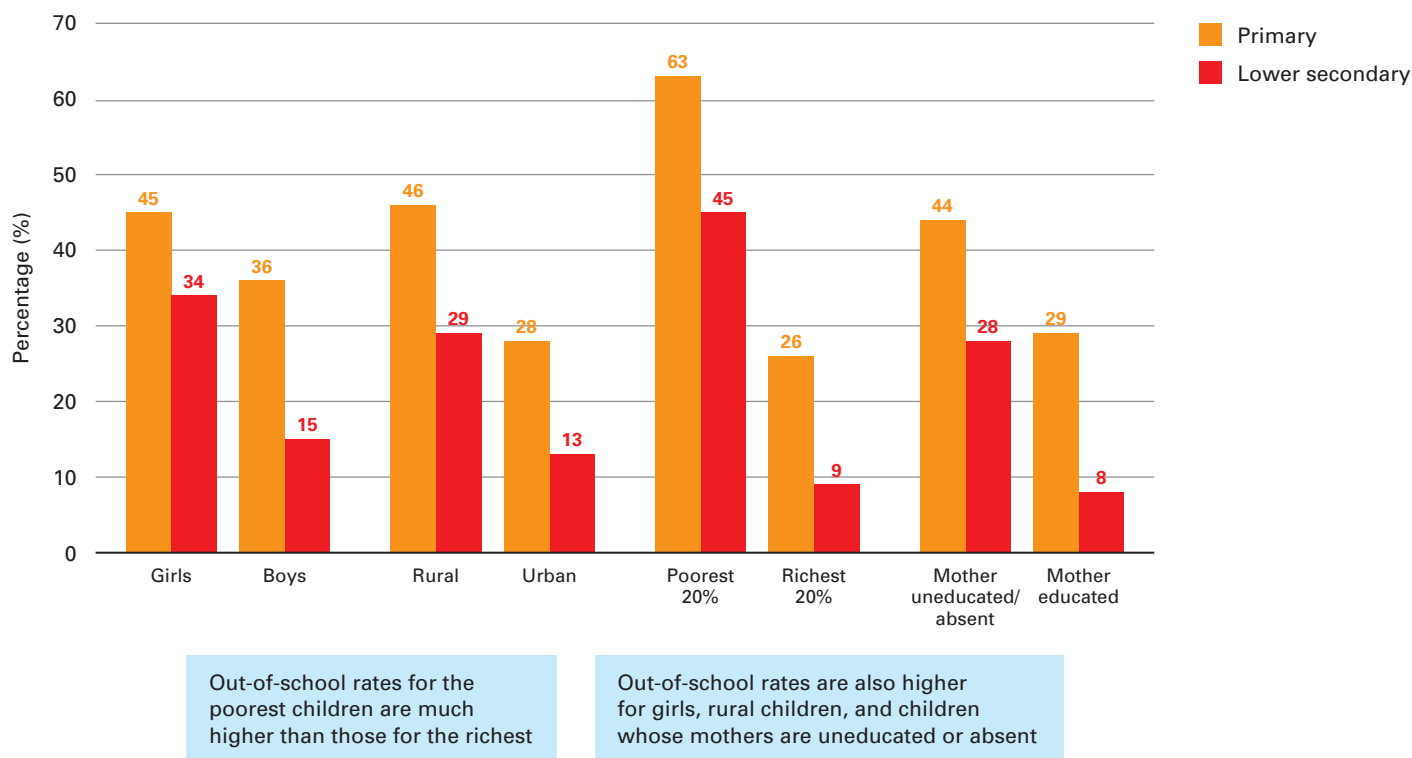


Across all cohorts, except 6 year olds, the out-of-school rate among child labourers is at least 10 percentage points higher

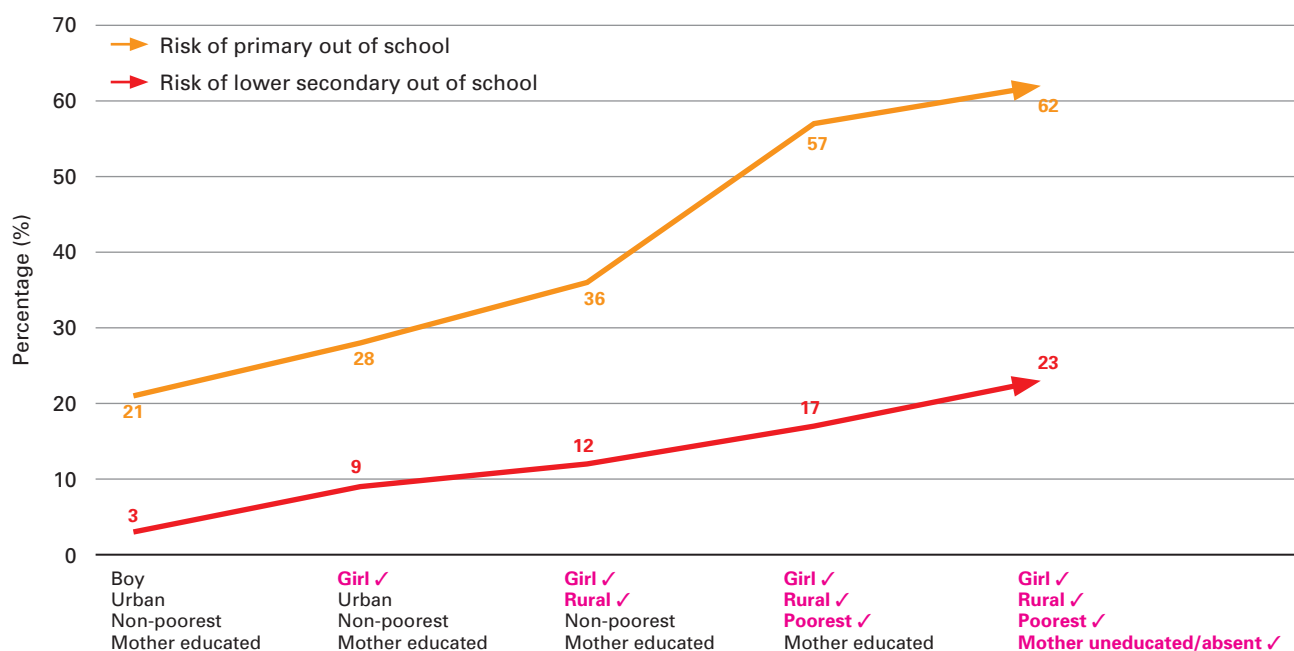
This difference becomes nearly 40 percentage points for children at 14 years old

³ SPMS 2012.⁴ Calculated from Child Labour Survey 2010 and Multiple Indicator Cluster Surveys (MICS) 2006.

5. Out-of-school children by background characteristics (Dimensions 2 and 3)⁵



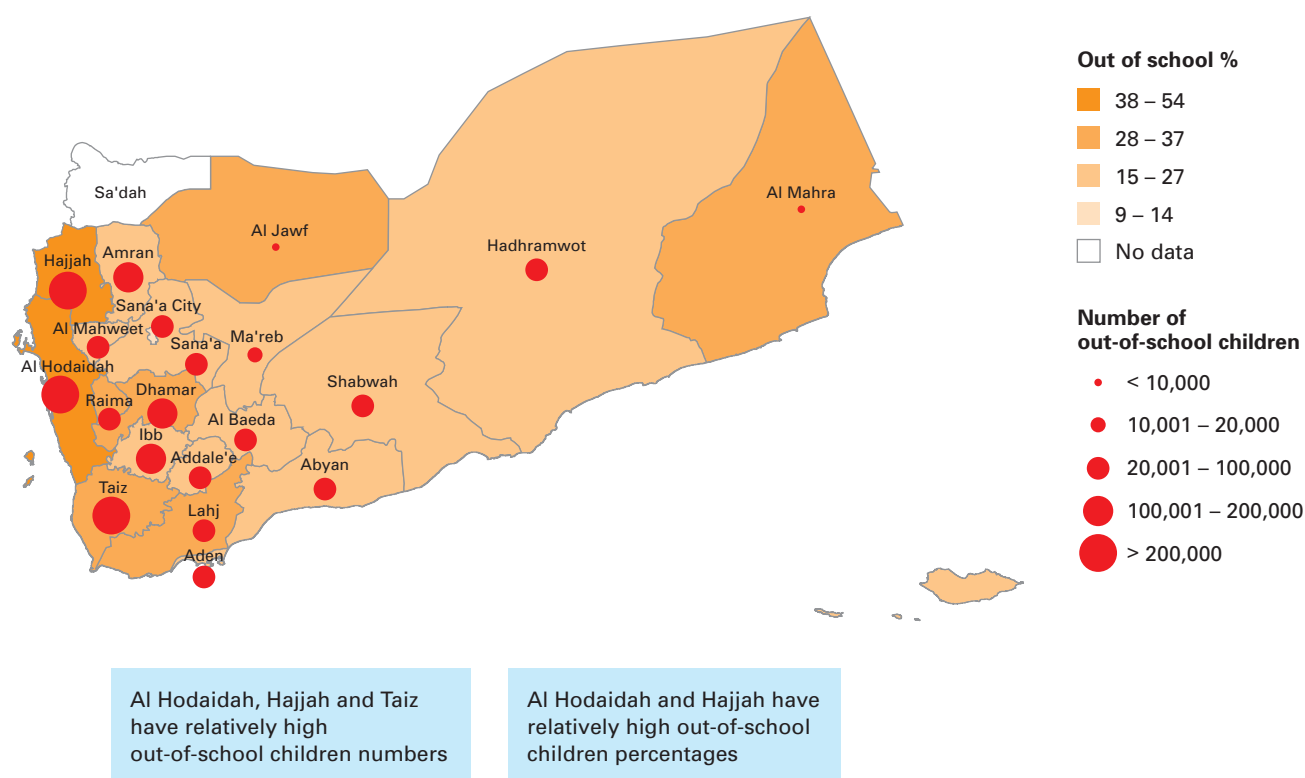
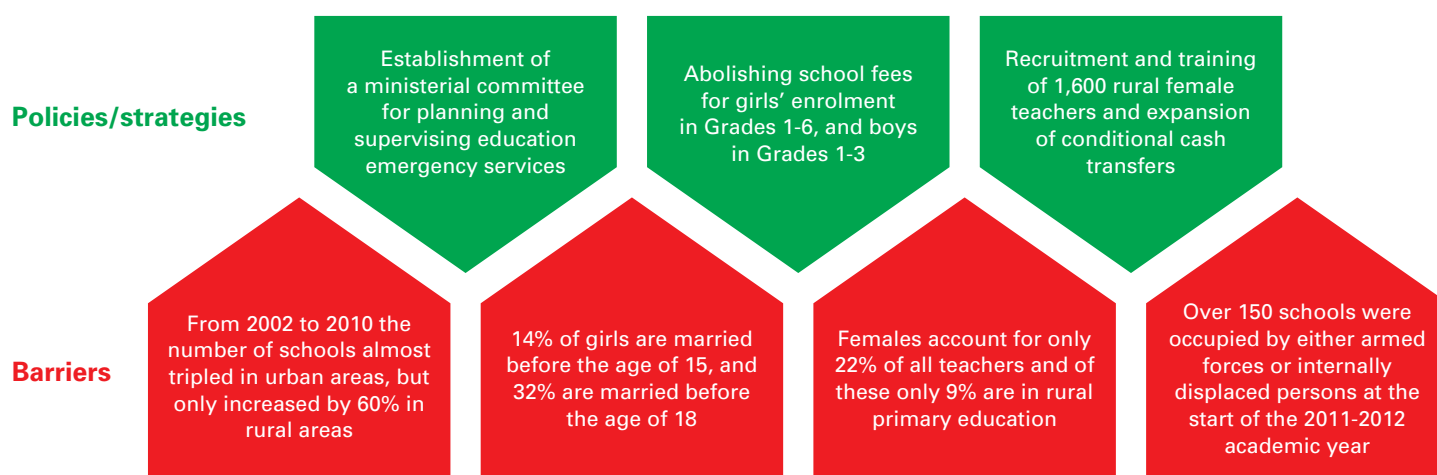
6. Cumulative out-of-school risk related to combined characteristics⁶



A child with all four risk characteristics is 2 times more likely to be out-of-school at primary school age, and 6 times more likely to be out-of-school at lower secondary school age. Household wealth plays a critical role in school attendance.

⁵ Calculated from MICS 2006. Uneducated mothers refer to those not finishing any formal education.

⁶ Calculated from MICS 2006 using multivariate logit regressions. Marginal effects are presented.

7. Out-of-school children (Dimensions 2 and 3) by governorate⁷8. Barriers and policies/strategies⁸⁷ SPMS 2012.⁸ Extracted from survey and policy reports published between 2007 and 2013.