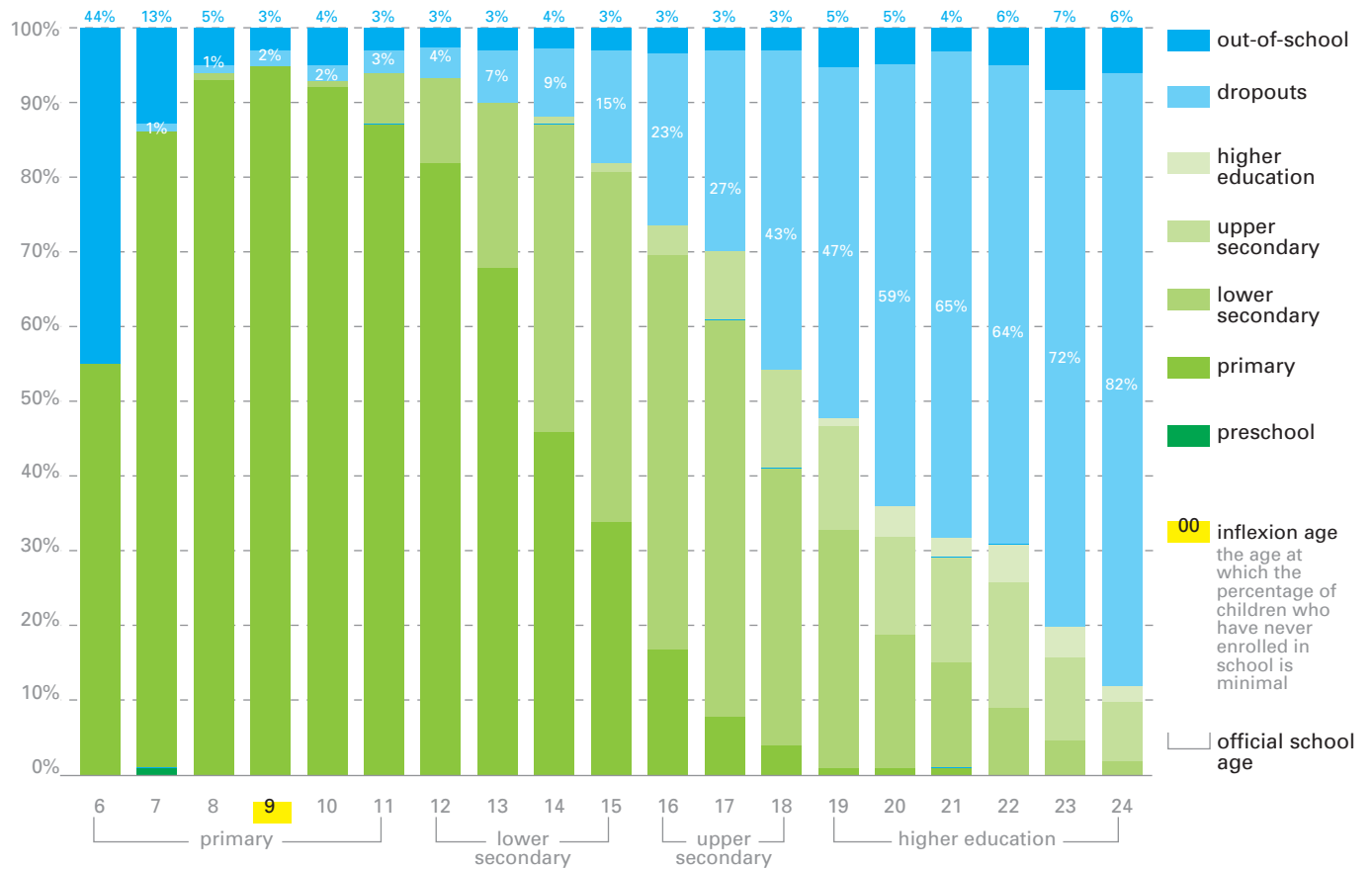


Source: Demographic and Health Survey (DHS 2005) - Estimated population (UIS 2005)

### 1. Schooling profile by age



late entry

9% of 6-11 years enter school late

over-aged students in primary school

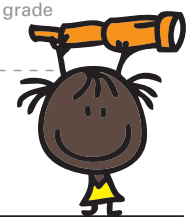
31% are at least 3 years older than the official age for their grade

over-aged students in final year of primary school

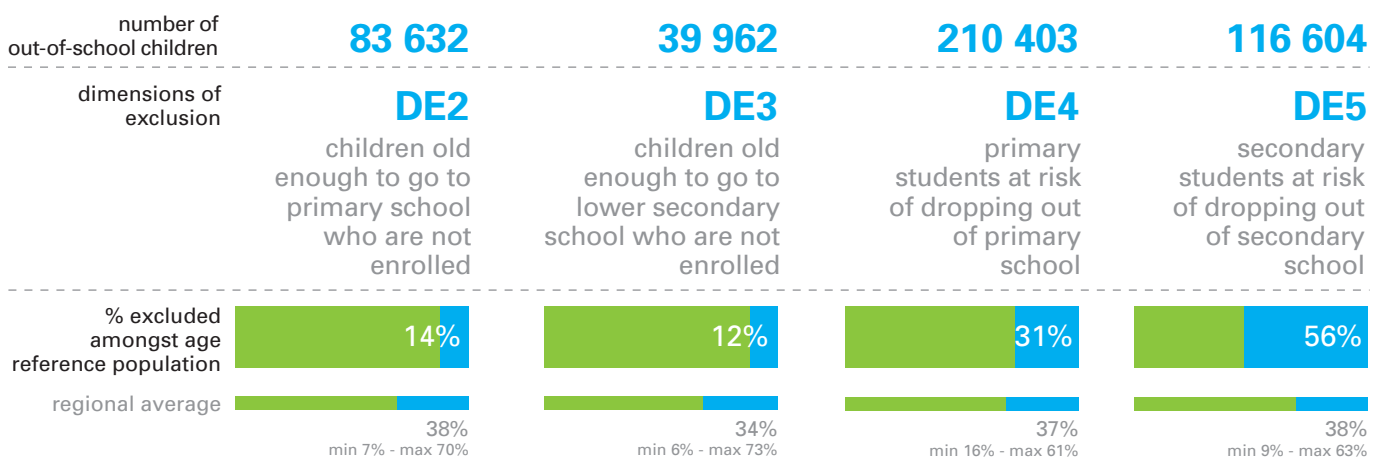
29% are at least 3 years older than the official age for their grade

over-age adolescents

3% of primary school students are over 15 years



### 2. The 4 dimensions to consider

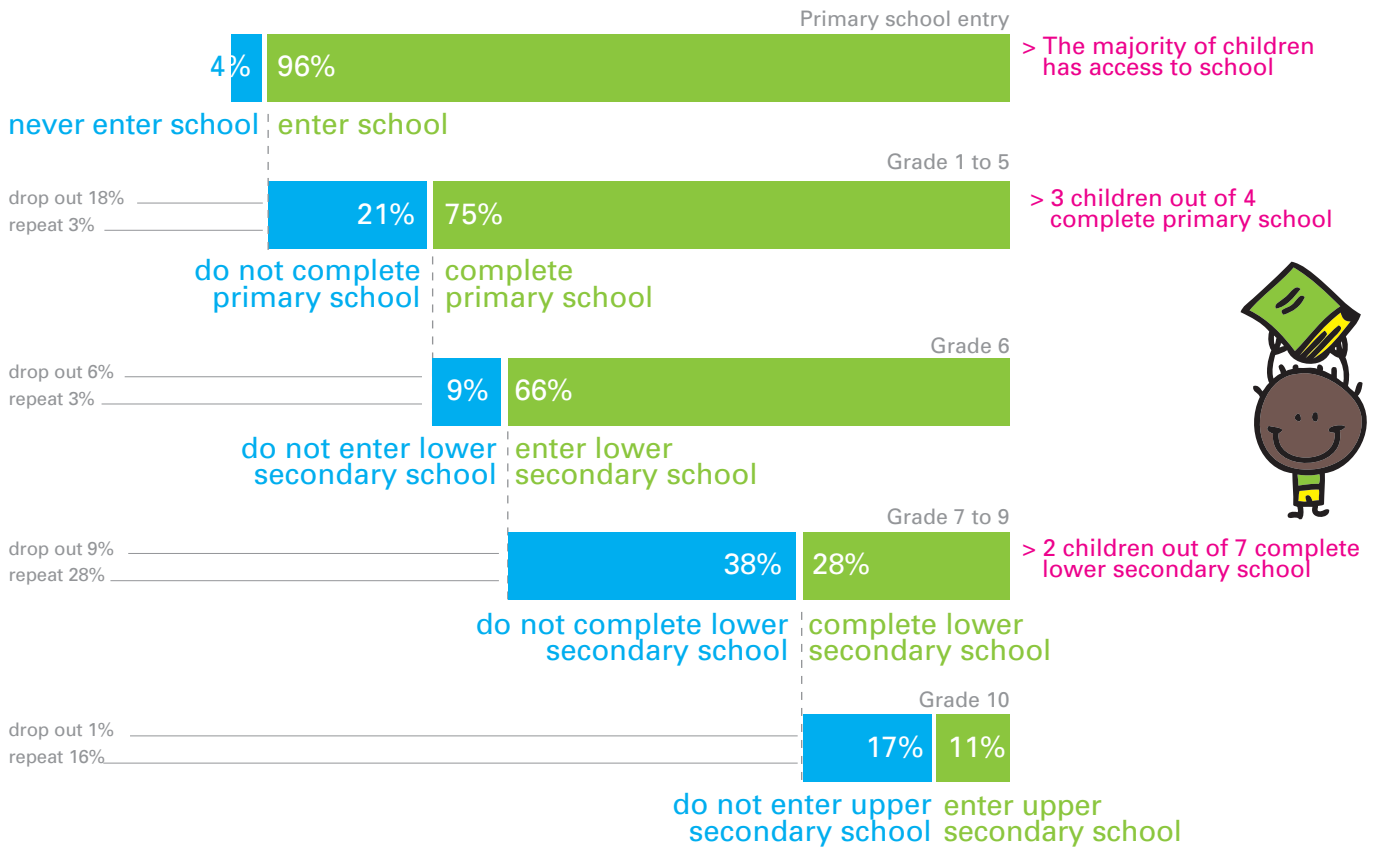




# CONGO

## 3. Schooling pathways of school aged children

Reference population: 17-18 years olds



## 4. Main factors of school exclusion

Reference population: 17-18 years olds

