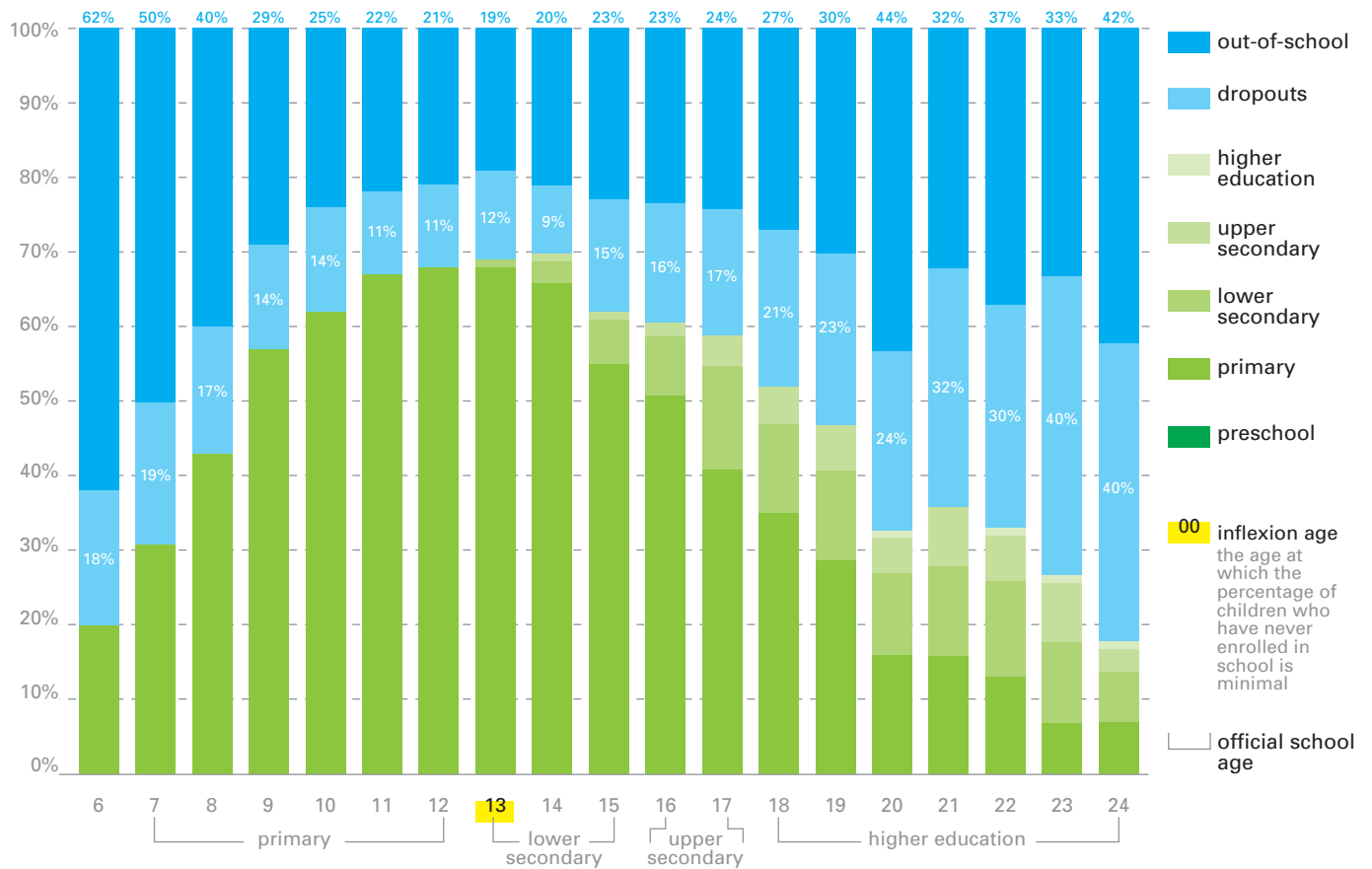




GUINEA-BISSAU

Source: Multiple Indicator Cluster Survey (MICS 2006) – Estimated population (UIS 2006)

1. Schooling profile by age



late entry

12% of 7-12 years enter school late

over-aged students in primary school

63% are at least 3 years older than the official age for their grade

over-aged students in final year of primary school

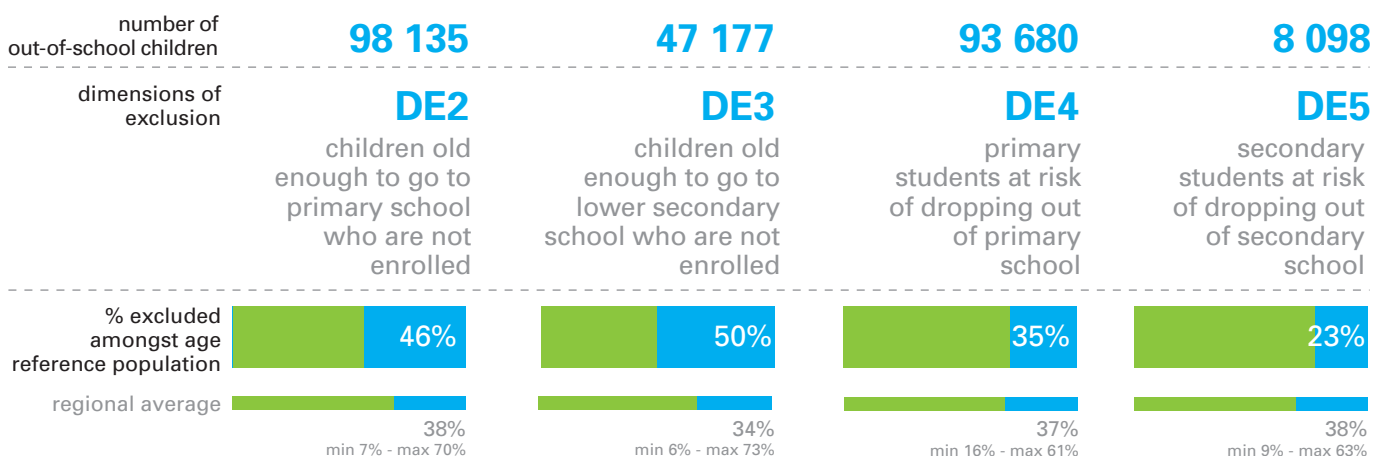
71% are at least 3 years older than the official age for their grade

over-age adolescents

9% of primary school students are over 15 years



2. The 4 dimensions to consider

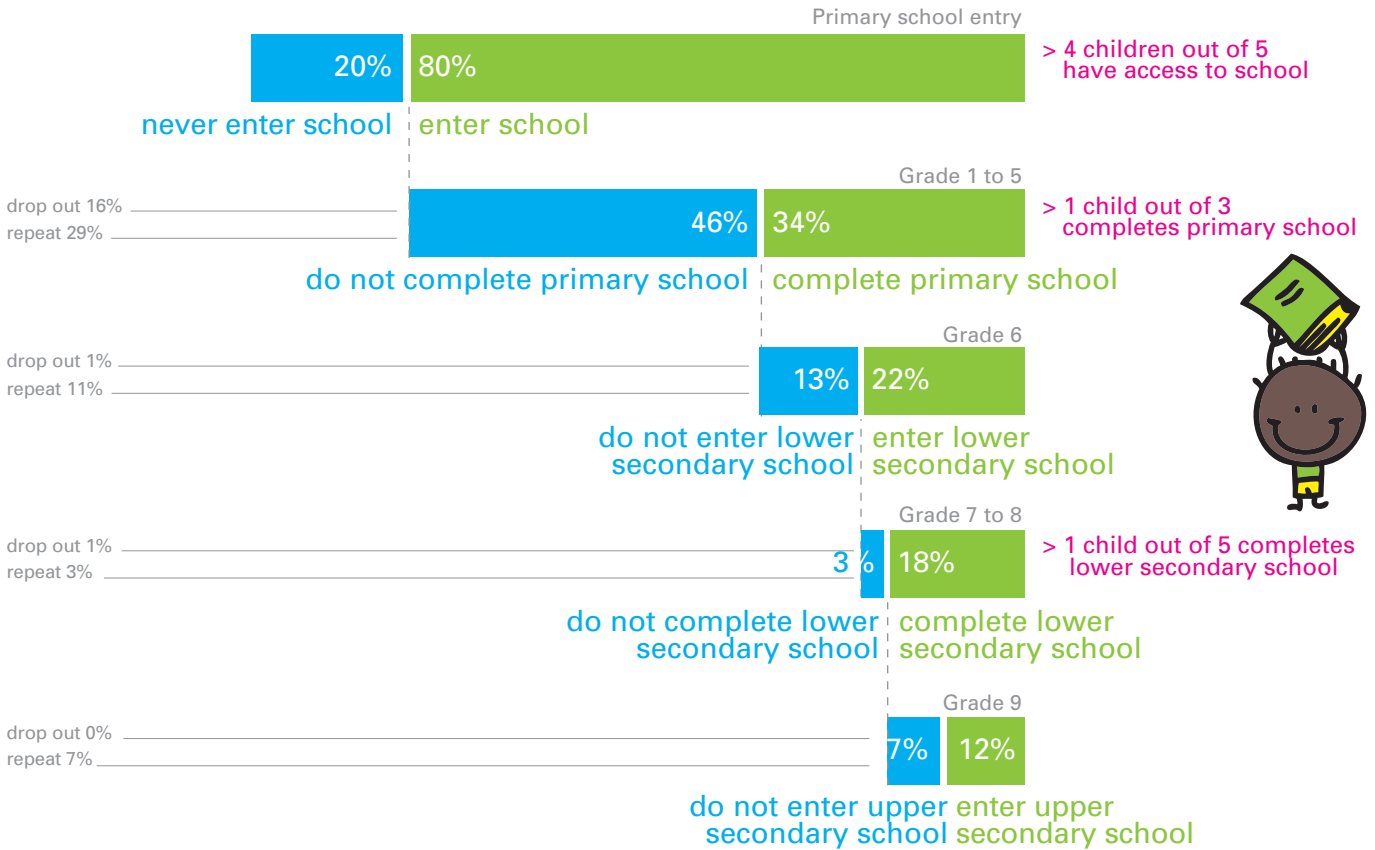




GUINEA-BISSAU

3. Schooling pathways of school aged children

Reference population: 17-18 years olds



4. Main factors of school exclusion

Reference population: 17-18 years olds

